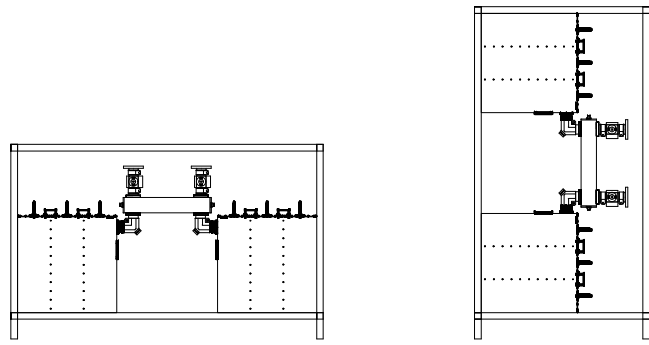
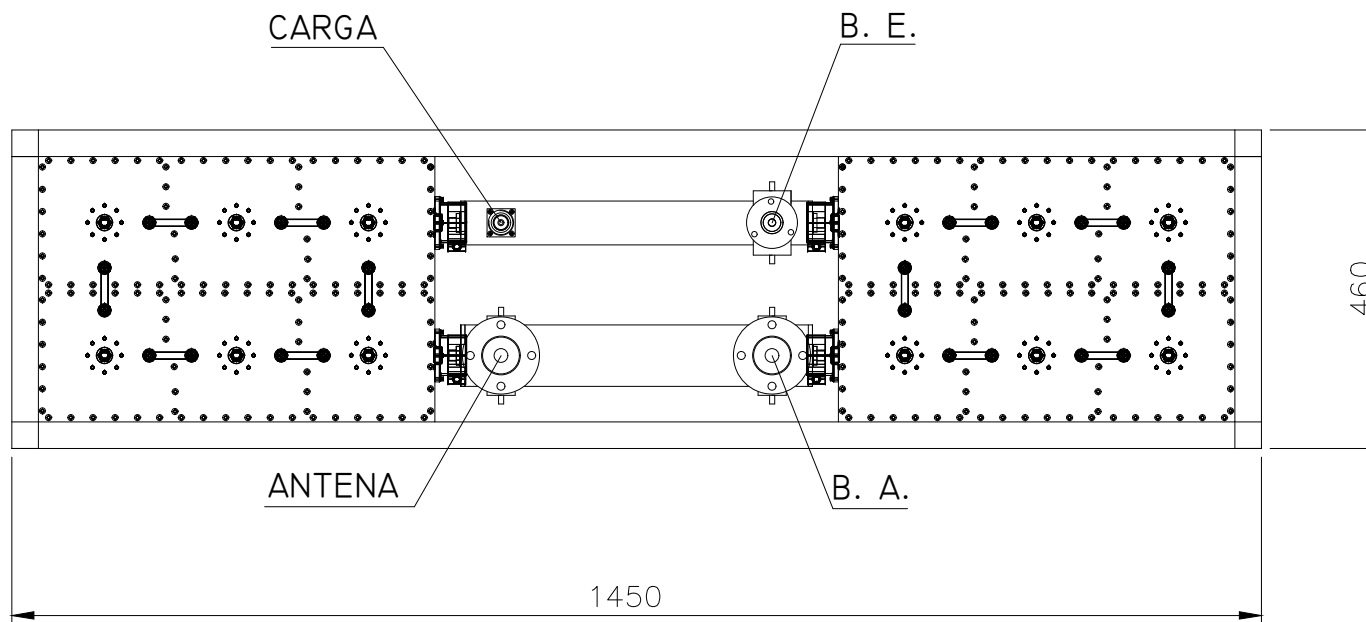
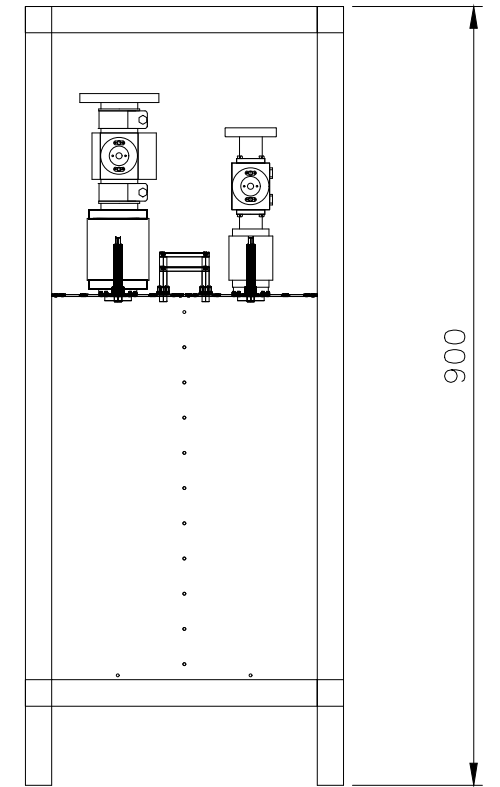
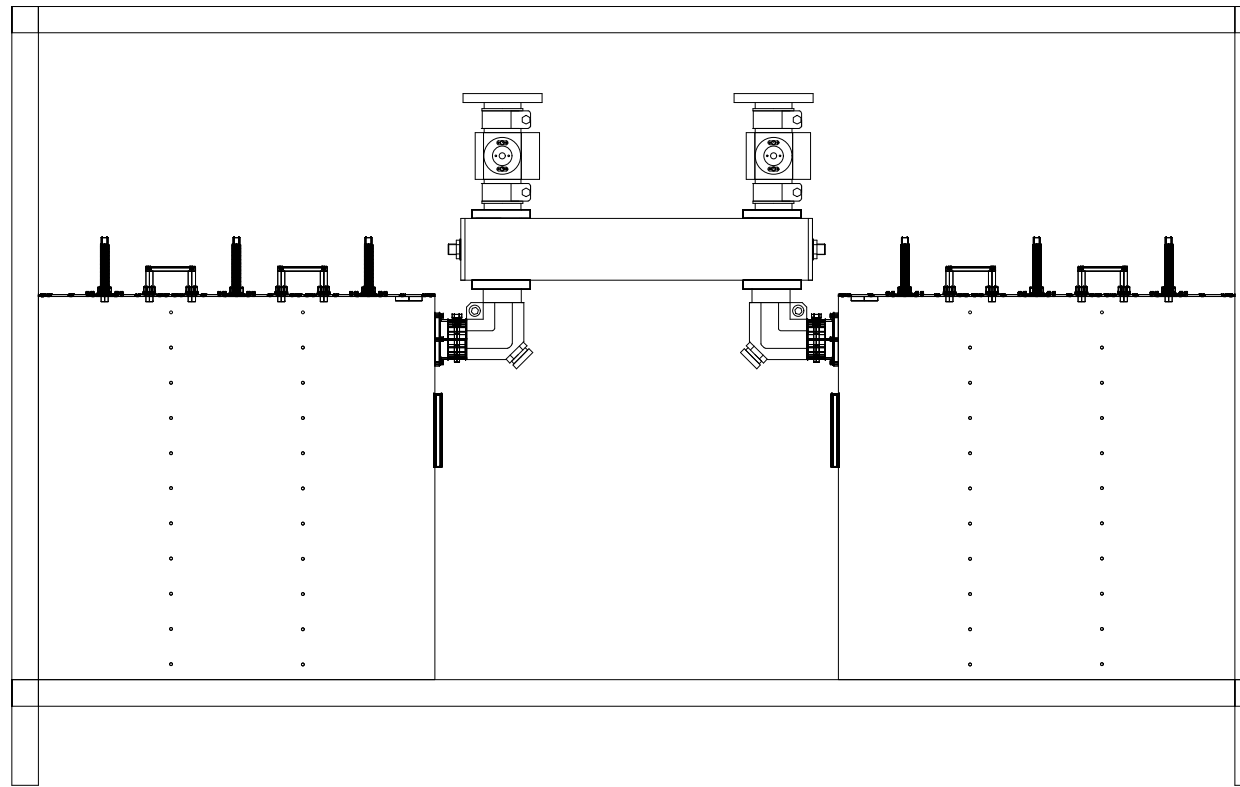


* POSIBILIDAD DE APILAMIENTO
EN HORIZONTAL O VERTICAL

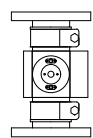
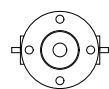


C\ Batalla de Brunete, Nº 48. 28946 Fuenlabrada, Madrid (ESPAÑA)
TEL: +34 916068870 - FAX: +34 916068842
http://www.vimesa.es - e-mail: vimesa@vimesa.es

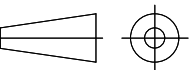
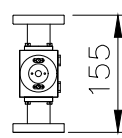


SONDAS REFLECTOMÉTRICAS

SONDA 1-5/8" (x2)
EN ENTRADA B. A.
Y SALIDA ANTENA



SONDA 7/8" (x1)
EN ENTRADA B. E.



DENOMINACION: CELLNEX - SISTEMAS DAB BALEARES COMBINADOR Z-CTE DAB			CANTIDAD	MATERIAL	ACABADO
ESCALA:	DISEÑADO	NOMBRE	FECHA	MARCA	ID PLANO
COTAS EN: milímetros	DIBUJADO	S. PARRA	13-01-2024	ID PIEZA:	ESQ-24-002-01
TOLERANCIAS	VERIFICADO	S. PARRA	13-01-2024		
2 DECIMALES: ±0.05	MODIFICACIONES	J. A. G.		NOTAS:	
1 DECIMAL: ±0.10					
SIN DECIMALES: ±0.30					
ANGULOS: ±0.5°					