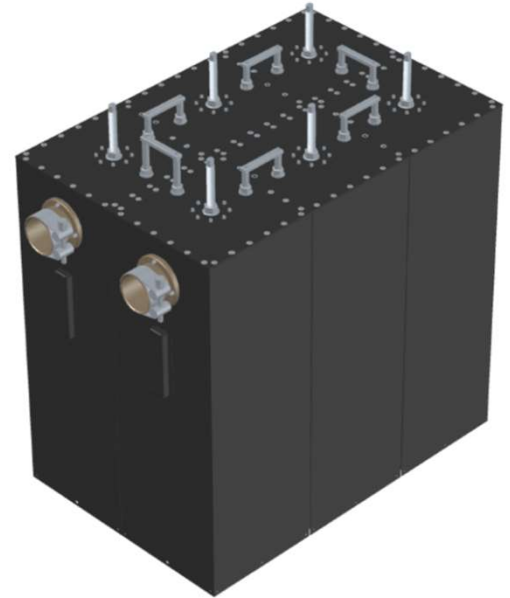


**Compact Design - Full Band Retunable - Low Insertion Loss - Heat Sinks optional**

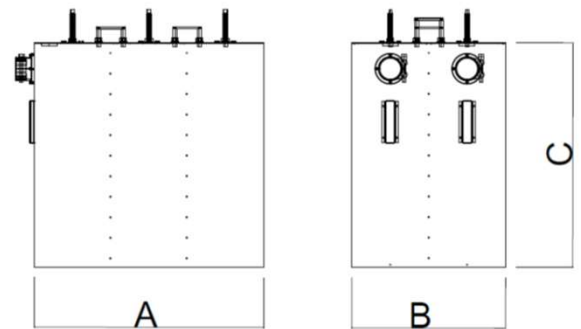
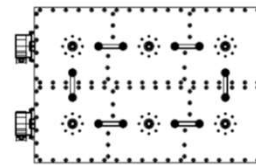
**ELECTRICAL DATA**

Frequency Range	174 - 240 MHz / 1.54 MHz
Impedance	50 Ω
VSWR	≤ 1.1:1 (26 dB) fo ± 0.77 MHz
Insertion Loss	fo < 0.60 dB ± 0.77 MHz < 1.15 dB
Selectivity	See table below
Connectors	Input / Output: 7/16(f) - 7/8" EIA - 1-5/8" EIA (depends on Input Power)
Maximum Power Rating	3 KW
Group Delay	500 – 950 ns (max.)



**MECHANICAL DATA**

Dimensions (A x B x C)	600 x 400 x 500 mm
Weight	42 Kg
Materials	Top cover and lateral walls in Aluminium PTFE insulator Tunning elements in Plated Brass, Copper and Aluminium Stainless Steel screws Hot painting
Operating Position	Vertical
Temperature Range	-5°C to 50° C
Temperature Stability	< 1 KHz/K



**SELECTIVITY DATA**

Frequency	Normal Tuning	Narrow Tuning
fo ± 1.0 MHz	> 12 dB	> 15 dB
fo ± 1.75 MHz	> 32 dB	> 38 dB
fo ± 2.2 MHz	> 45 dB	> 45 dB
fo ± 3.0 MHz	> 45 dB	> 45 dB

Curve (Normal Tuning)

