

BII Vertical Polarization – Demountable - Compact Design – Especial for Parallel Stacks

ELECTRICAL DATA

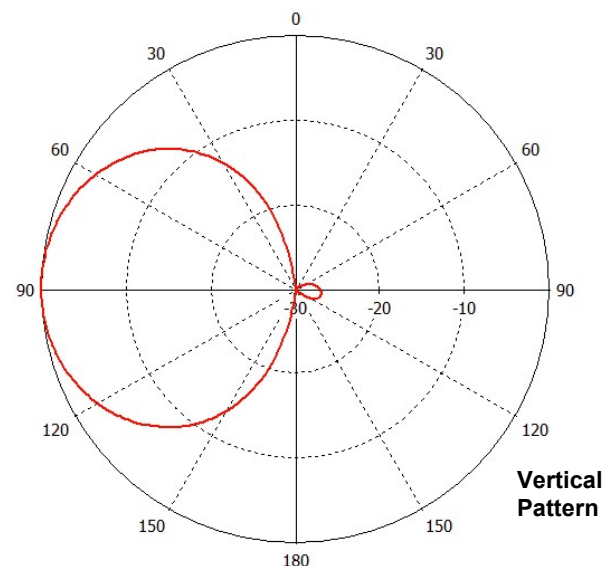
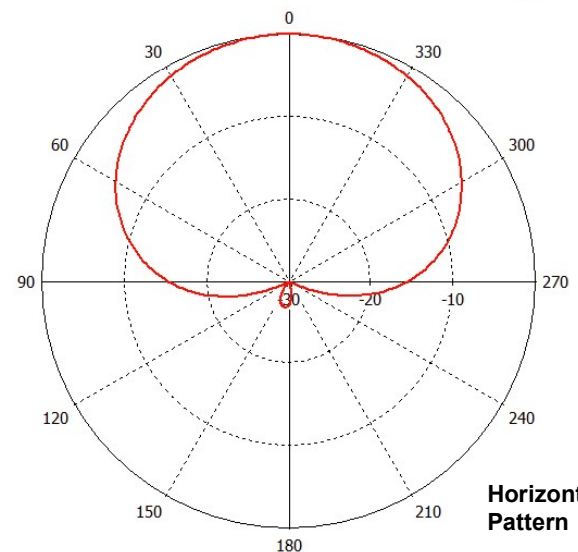
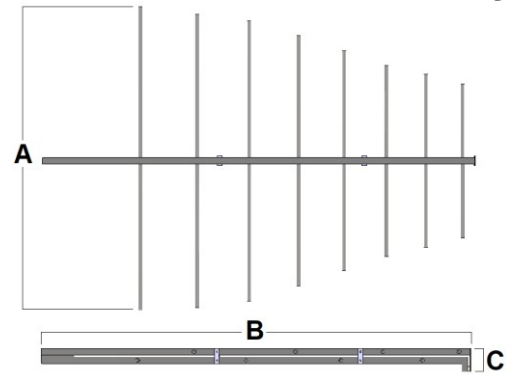
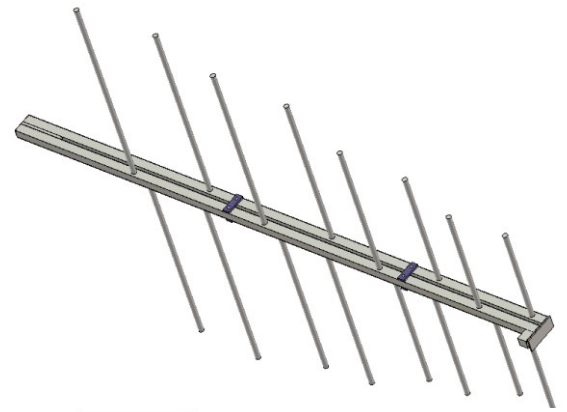
| | | |
|----------------------|-------------------------------------|----------|
| Frequency range | 87.5 – 108.0 MHz | |
| Gain average | 6.85 dBd (9.0 dBi) | |
| 3 dB Beam Width | Horizontal: 89.8° - Vertical: 60.7° | |
| Front to Back Ratio | > 27.0 dB | |
| Impedance | 50 Ω | |
| VSWR | < 1.15:1 Broad Band | |
| Polarization | Vertical | |
| Maximum Power Rating | 3 KW | 6 KW |
| Connector | DIN 7/16 | EIA 7/8" |
| Lighting Protection | DC Grounded | |

MECHANICAL DATA

| | | |
|------------------------------|---|------|
| Dimensions (A x B x C) | 1880 x 2634 x 146 mm | |
| Weight | 23 Kg | |
| Maximum Wind Speed | 200 Km/h | |
| Wind Load | 65 Kg @ 160 Km/h (side) 8 Kg @ 160 Km/h (front) | |
| Materials | Dipole in Stainless Steel Inner Line Silver Plated Silicon O.Ring, PTFE Insulator | |
| Mounting | Mast Ø 60, 90 or 114 mm | |
| Vertical Spacing | 0.9 λ (2700 mm) | |
| Temperature Range / Humidity | -20°C to 60° C | 100% |

ARRAY DATA

| Number of Bays | Number Anten. per Bay | Gain (dBd) | System Height (mm) |
|----------------|-----------------------|------------|--------------------|
| 1 | 1 | 6.85 | 1880 |
| 2 | 1 | 9.85 | 4580 |
| 3 | 1 | 11.65 | 7280 |
| 4 | 1 | 12.85 | 9980 |
| 6 | 1 | 14.65 | 15380 |
| 8 | 1 | 15.85 | 20780 |



BII Vertical Polarization – Demountable - Compact Design – Especial for Parallel Stacks

ELECTRICAL DATA

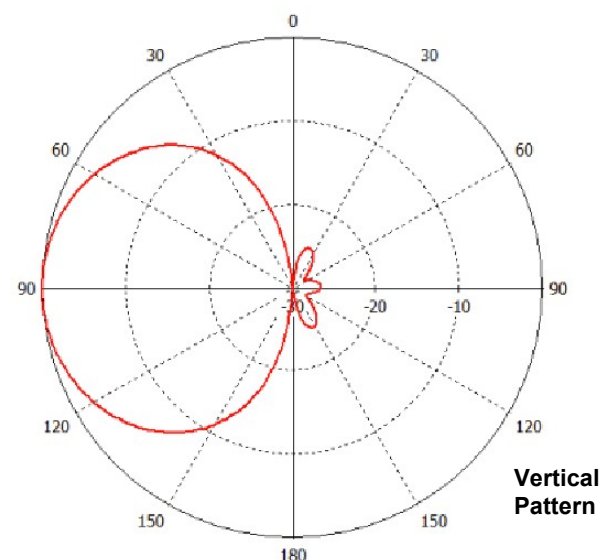
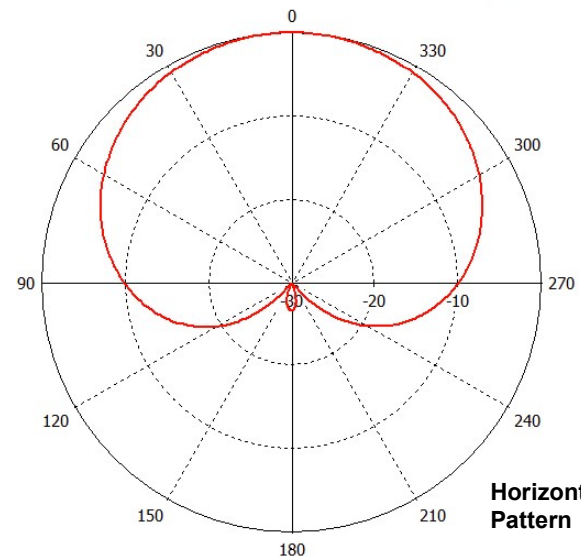
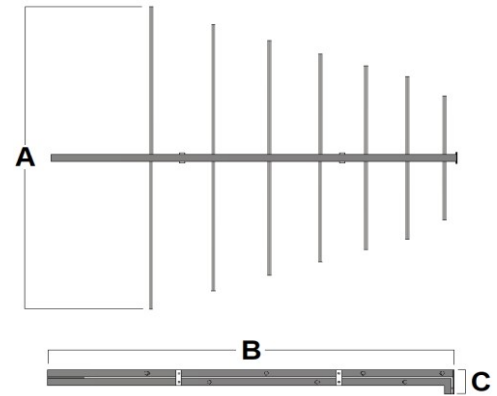
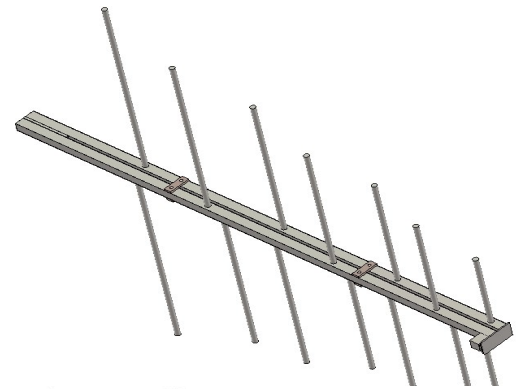
| | | |
|----------------------|--------------------------------------|----------|
| Frequency range | 87.5 – 108.0 MHz | |
| Gain average | 5.68 dBd (7.83 dBi) | |
| 3 dB Beam Width | Horizontal: 104.7° - Vertical: 64.1° | |
| Front to Back Ratio | > 27.0 dB | |
| Impedance | 50 Ω | |
| VSWR | < 1.15:1 Broad Band | |
| Polarization | Vertical | |
| Maximum Power Rating | 3 KW | 6 KW |
| Connector | DIN 7/16 | EIA 7/8" |
| Lighting Protection | DC Grounded | |

MECHANICAL DATA

| | | |
|------------------------------|---|------|
| Dimensions (A x B x C) | 1830 x 2190 x 146 mm | |
| Weight | 20 Kg | |
| Maximum Wind Speed | 200 Km/h | |
| Wind Load | 57 Kg @ 160 Km/h (side) 8 Kg @ 160 Km/h (front) | |
| Materials | Dipole in Stainless Steel Inner Line Silver Plated Silicon O.Ring, PTFE Insulator | |
| Mounting | Mast Ø 60, 90 or 114 mm | |
| Vertical Spacing | 0.9 λ (2700 mm) | |
| Temperature Range / Humidity | -20°C to 60° C | 100% |

ARRAY DATA

| Number of Bays | Number Anten. per Bay | Gain (dBd) | System Height (mm) |
|----------------|-----------------------|------------|--------------------|
| 1 | 1 | 5.68 | 1830 |
| 2 | 1 | 8.68 | 4530 |
| 3 | 1 | 10.48 | 7230 |
| 4 | 1 | 11.68 | 9930 |
| 6 | 1 | 13.48 | 15330 |
| 8 | 1 | 14.68 | 20730 |



BII Vertical Polarization – Demountable - Compact Design – Special for Parallel Stacks

ELECTRICAL DATA

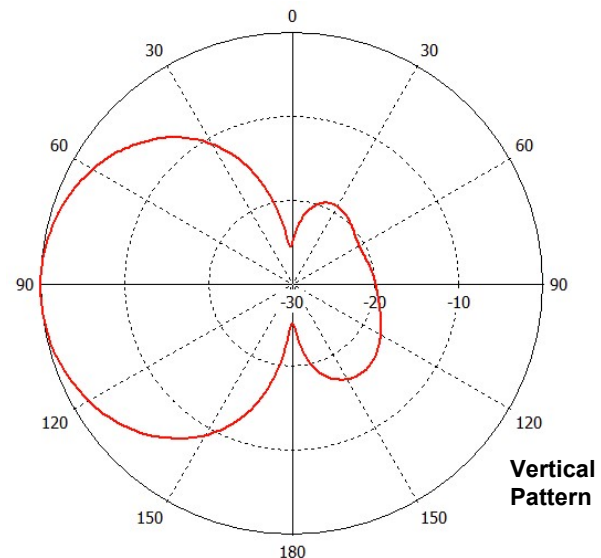
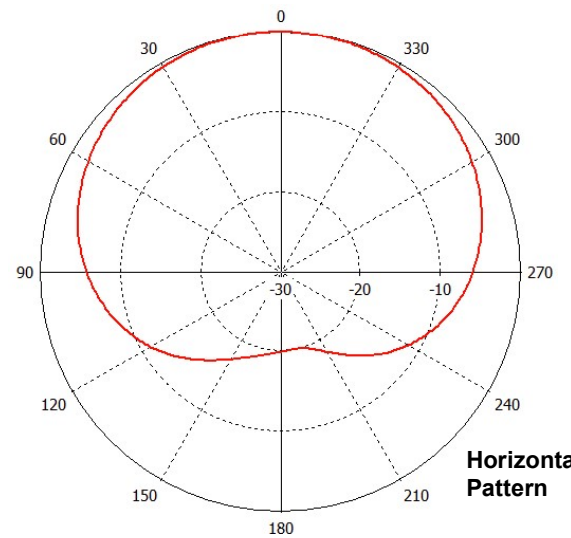
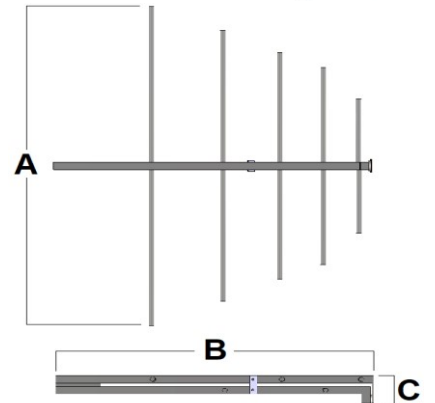
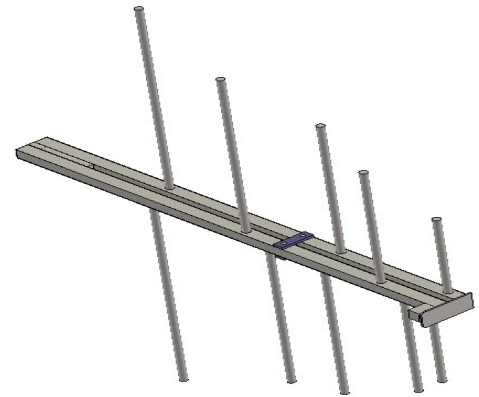
| | | |
|----------------------|--------------------------------------|----------|
| Frequency range | 87.5 – 108.0 MHz | |
| Gain average | 4.41 dBd (6.56 dBi) | |
| 3 dB Beam Width | Horizontal: 133.1° - Vertical: 68.6° | |
| Front to Back Ratio | > 20.0 dB | |
| Impedance | 50 Ω | |
| VSWR | < 1.18:1 Broad Band | |
| Polarization | Vertical | |
| Maximum Power Rating | 3 KW | 6 KW |
| Connector | DIN 7/16 | EIA 7/8" |
| Lighting Protection | DC Grounded | |

MECHANICAL DATA

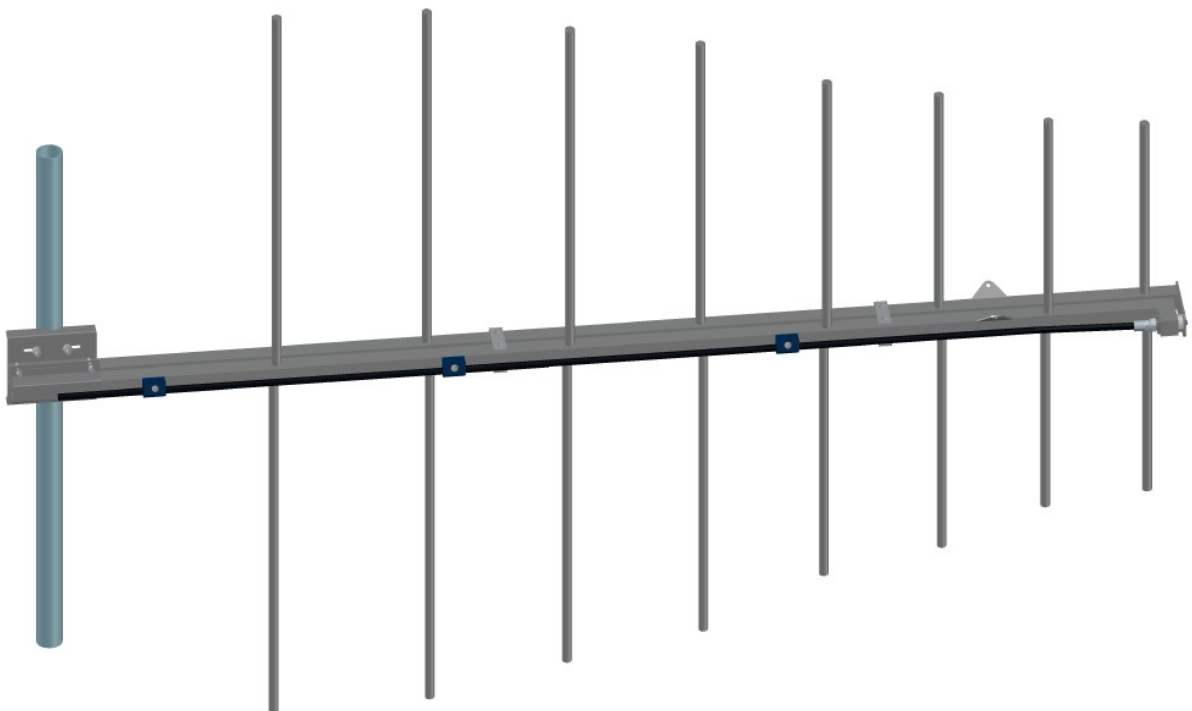
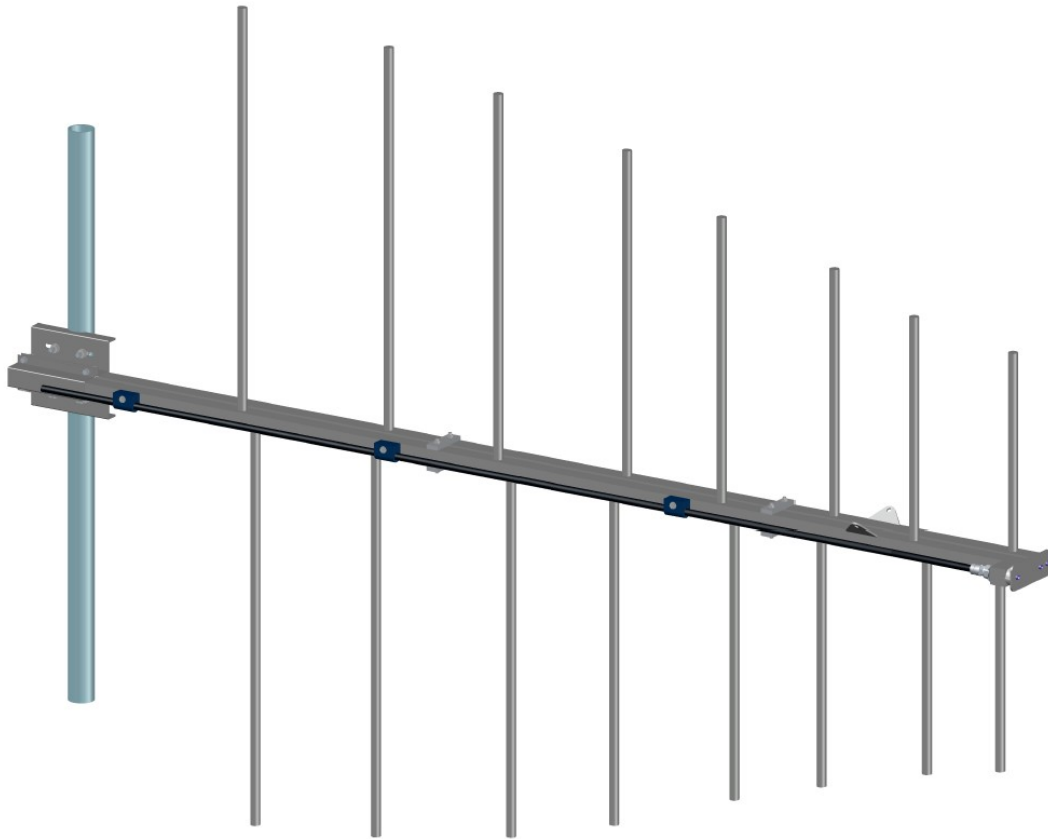
| | | |
|------------------------------|---|------|
| Dimensions (A x B x C) | 1730 x 1430 x 100 mm | |
| Weight | 15 Kg | |
| Maximum Wind Speed | 200 Km/h | |
| Wind Load | 40 Kg @ 160 Km/h (side) 8 Kg @ 160 Km/h (front) | |
| Materials | Dipole in Stainless Steel Inner Line Silver Plated Silicon O.Ring, PTFE Insulator | |
| Mounting | Mast Ø 60, 90 or 114 mm | |
| Vertical Spacing | 0.9 λ (2700 mm) | |
| Temperature Range / Humidity | -20°C to 60° C | 100% |

ARRAY DATA

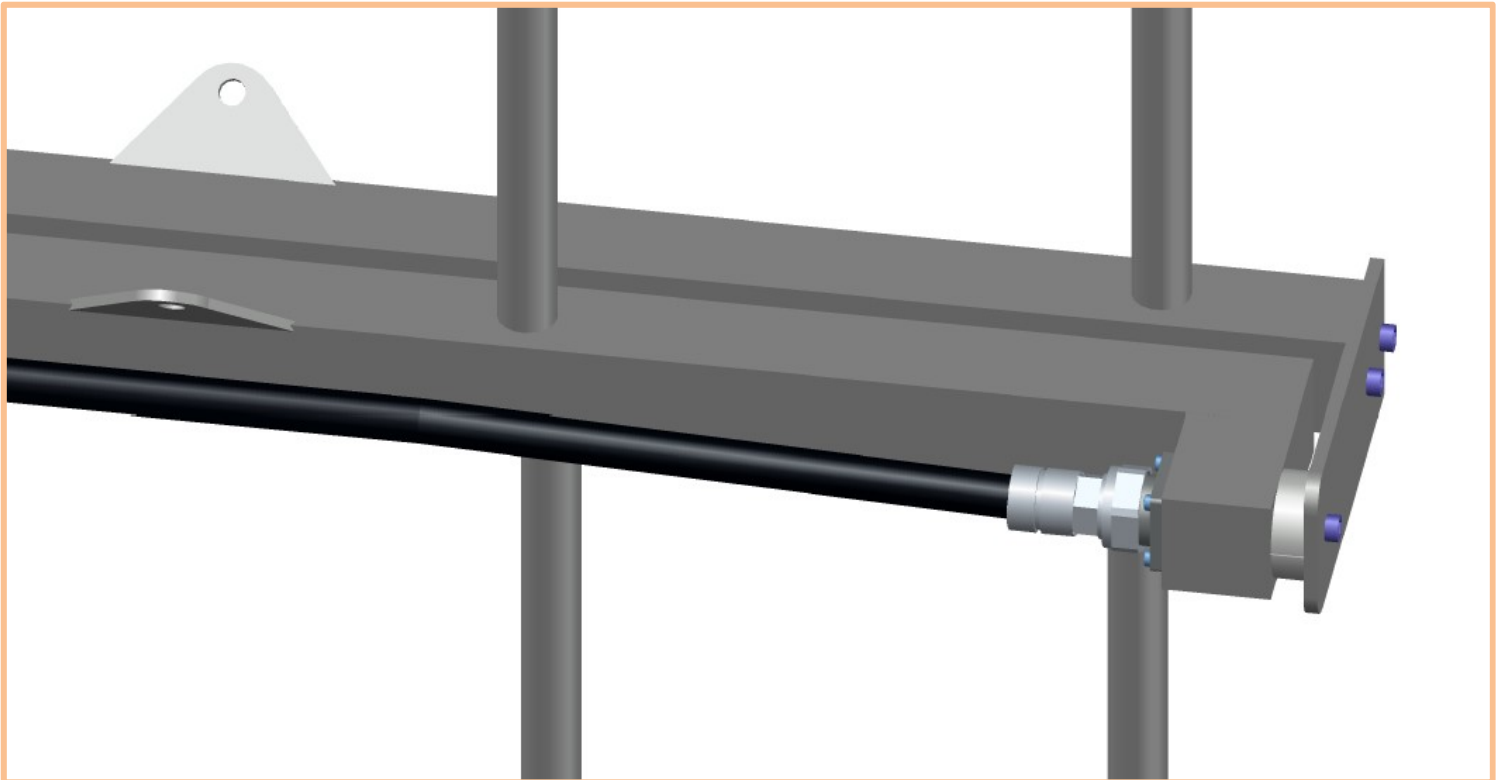
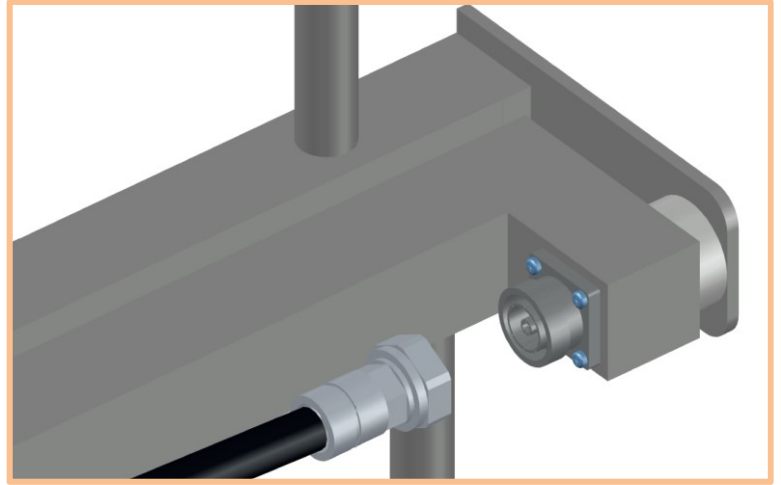
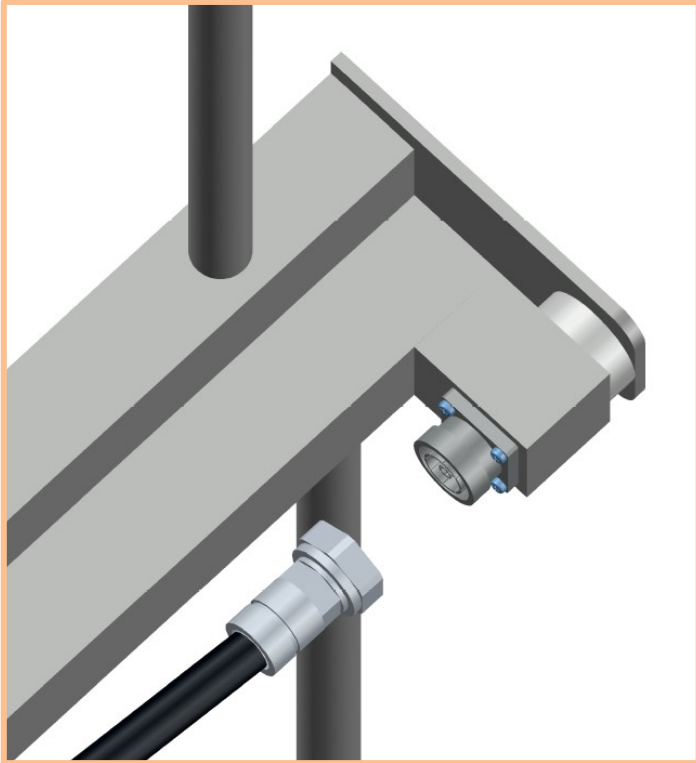
| Number of Bays | Number Anten. per Bay | Gain (dBd) | System Height (mm) |
|----------------|-----------------------|------------|--------------------|
| 1 | 1 | 4.41 | 1730 |
| 2 | 1 | 7.41 | 4430 |
| 3 | 1 | 9.21 | 7130 |
| 4 | 1 | 10.41 | 9830 |
| 6 | 1 | 12.21 | 15230 |
| 8 | 1 | 13.41 | 20630 |



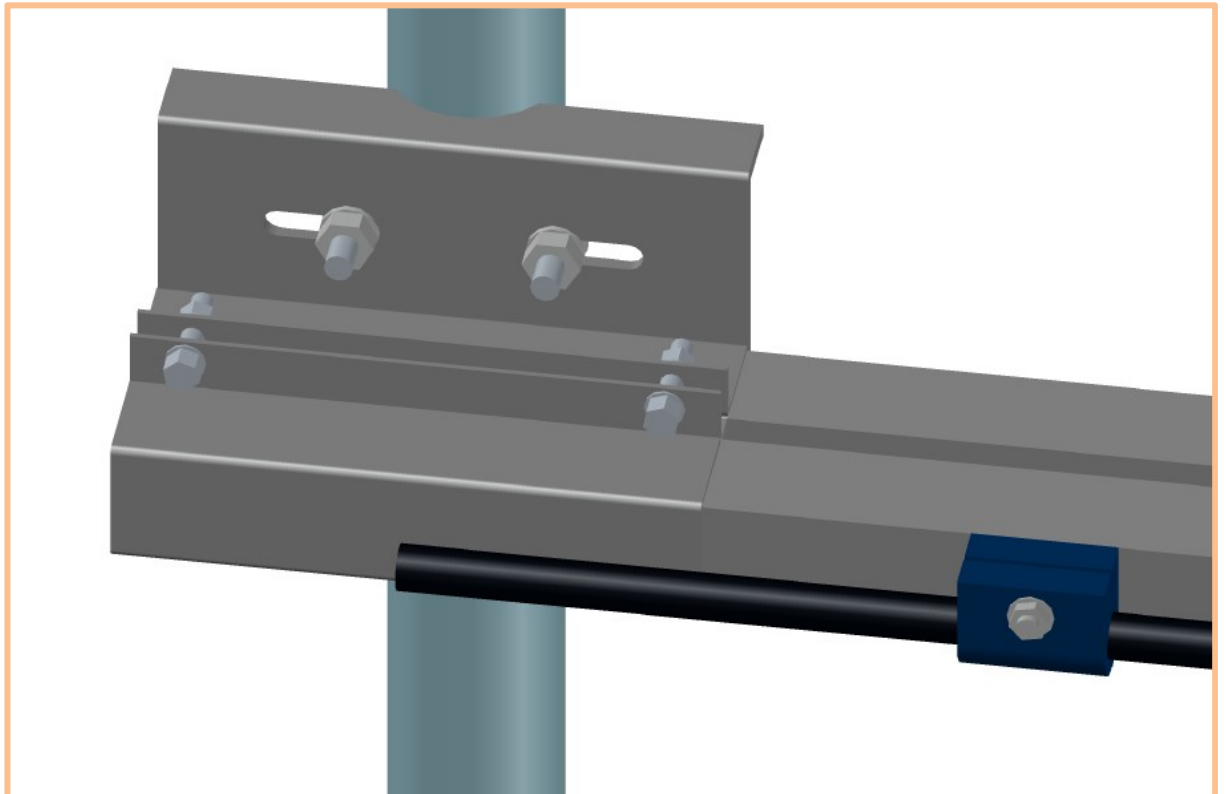
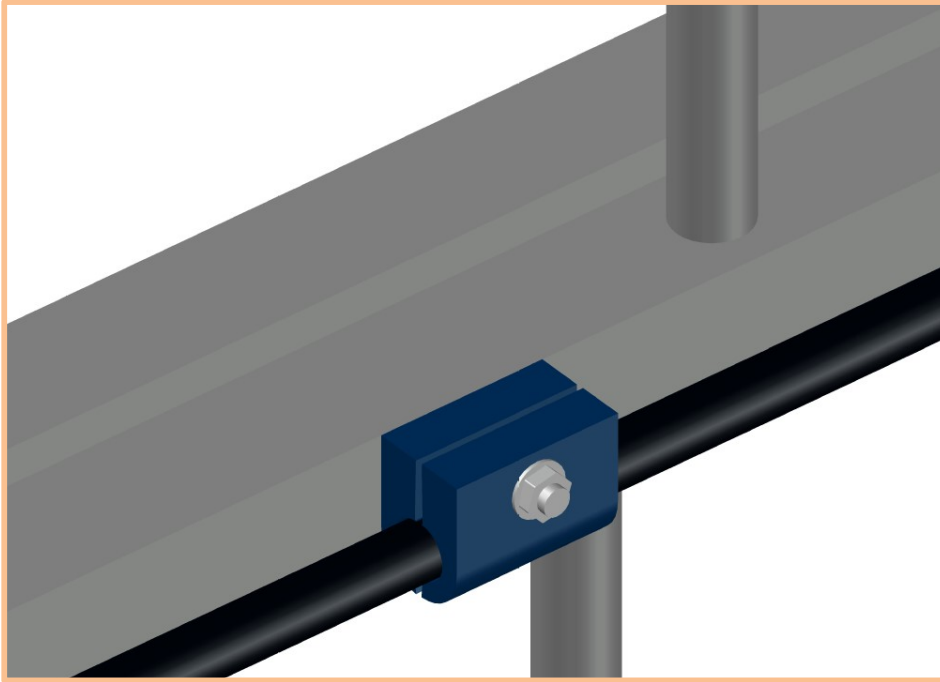
1. GENERAL APPEARANCE



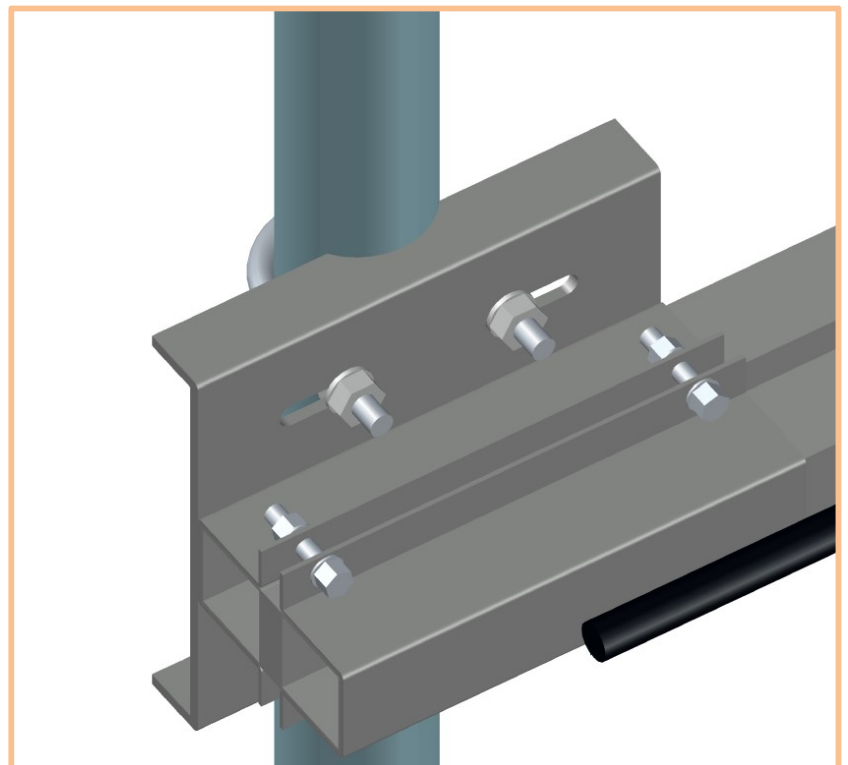
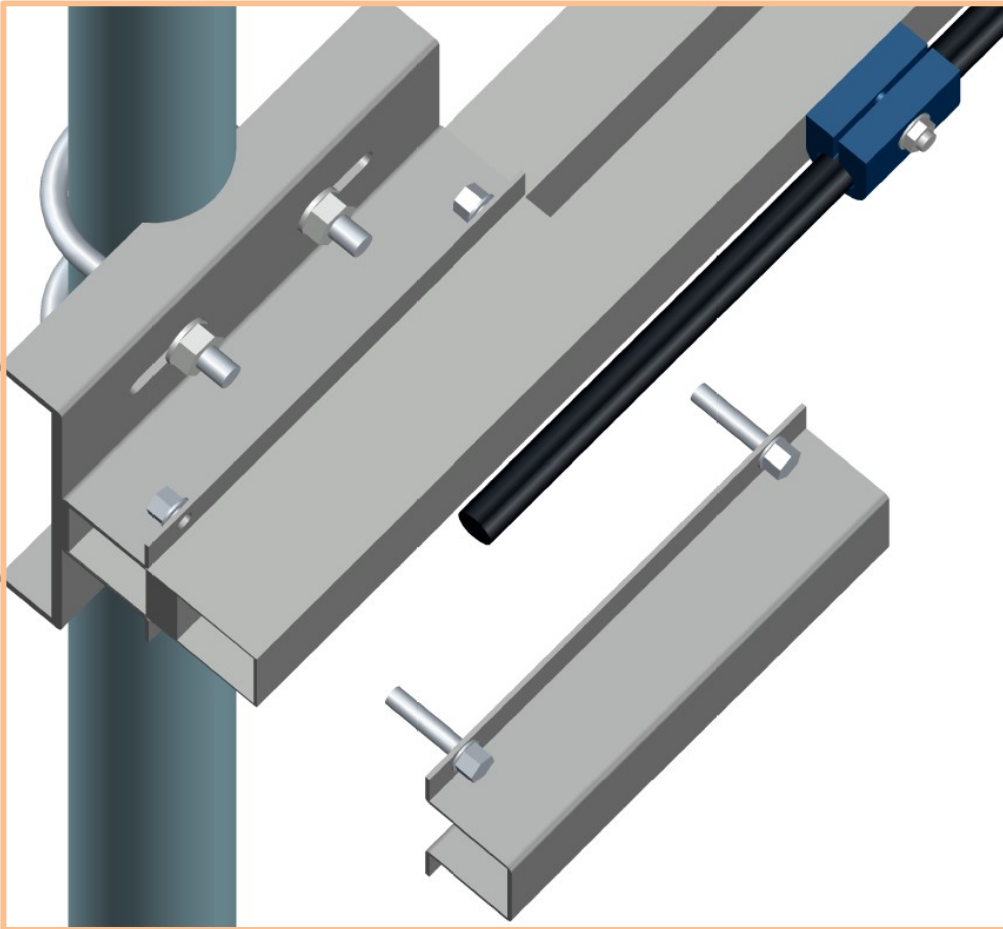
2. CONNECTION



3. WIRE FIXING



4. MAST MOUNTING



5. ROPES TO TOWER (7 AND 8 ELEMENTS ANTENNA)

